



## Embark Mirror # 56-18114 – Adjustable Clamp

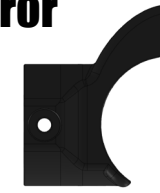
### Installation & Operations Manual for Embark Mirror

#### Contents:



Left Mirror

Right Mirror



54-96327-  
Clamp Base (2)



54-96328 -  
Clamp End (2)



54-SW-90176  
M6x10mm Button  
Head Screw (4)



M6x25mm Socket  
Head Cap Screw (4)



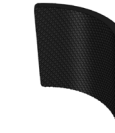
54-SW-90145 -  
M10x30mm Socket  
Head Screw (2)



54-90040 -  
M6 Lock Nut (4)



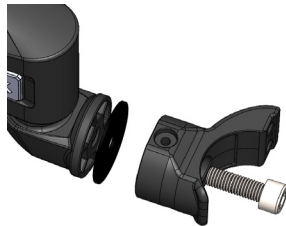
54-SW-90122  
Rubber Washer  
(2)



54-96331 -  
Rubber Pad (2)

#### Installation:

1.



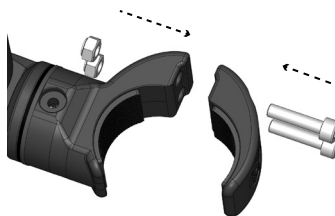
Assemble the Clamp Base to one of the Mirrors by inserting the M10x30mm Socket Head Cap Screw through the middle of the Clamp Base. Add the Rubber Washer over the Screw so it will be in-between the Mirror and the Clamp Base. Tighten the screw hand tight with the Clamp Base being perpendicular to the mirror.

2.



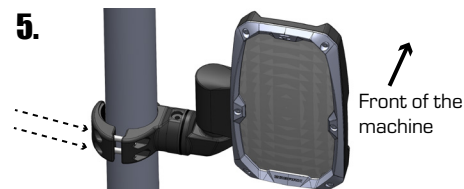
After M10x30mm Socket Head Cap Screw is tight, peel the adhesive off the Rubber Pad and apply to the recessed area on the Clamp Base. Apply with even pressure for 30 seconds.

4.



Now, insert the M6 Lock Nuts into the slots on the Clamp Base and install the M6x25mm Socket Head Cap Screw through the Clamp End. Tighten the screws so they engage with the nuts but the clamp is still loose.

5.



Slide the clamp around the A-pillar in the location that works best for you. Hold the mirror and tighten the two M6x25mm Socket Head Cap Screws until it's tight and secured to the A-pillar.

6.



Screw the M6x10mm Button Head Screws into the top and bottom of the Clamp Base. Due to different mirror constructions these screws may or may not bottom out on a post. It's recommended to put a dab of blue thread locker on these screws (not provided).

Seizmik makes Windshields, Doors, Tops, Hood Racks, and other great accessories for utility vehicles & side x sides. Our products are engineered tough for long life and tested under the harshest of conditions.

[service@seizmik.com](mailto:service@seizmik.com)

1-866-838-3366  
between 9:00AM and 5:00PM EST.

[www.seizmik.com/customer-support](http://www.seizmik.com/customer-support)

