

CAN-AM DEFENDER MAX REAR SOFT DOORS



SEIZMIK®

 service@seizmik.com

 1-866-838-3366
between 9:00 AM and 5:00 PM EST.



www.seizmik.com/customer-support

Parts Available For These Popular Brands and Others

POLARIS

can-am



HONDA

Kawasaki



YAMAHA

PRODUCT INFORMATION

Installation Information:

This product may require modifications to your vehicle. Please familiarize yourself with all the steps before beginning assembly.

Compatibility Info:

This door set is designed to work with other Seizmik branded Accessories for Can-Am Defender as well as Can-Am OEM hard tops. Please note Seizmik cannot guarantee fitment with other branded aftermarket products. Please research installation details on our products and others when trying to combine different branded accessories.

If you have any questions, comments, need assistance, or are missing parts, please visit our website at www.seizmik.com/customer-support or email us at service@seizmik.com

Visit www.seizmik.com for more information on our product or call 1-866-838-3366 between 9:00AM and 5:00PM EST.

TOOLS NEEDED:

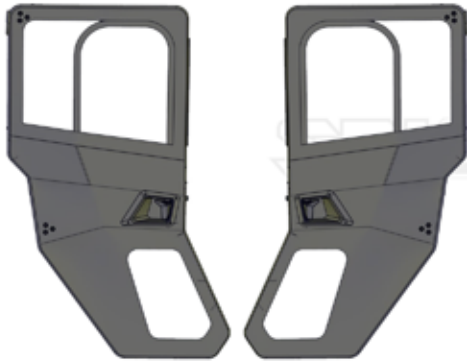
- RUBBER Mallet
- 12 MM SOCKET
- 14 MM SOCKET
- ADJUSTABLE WRENCH
- PHILLIPS HEAD SCREW DRIVER
- TORQUE BIT WRENCH
- UTILITY KNIFE / DREMEL



WARNING: This product is designed to protect from the elements of weather and is not designed for passenger retention purposes. Vehicle passengers should not lean on or against the doors. All passengers should wear seat belts while the vehicles is in use. Passengers leaning on or against the doors or failure of passengers to wear seat belts could result in serious bodily injury or death, especially when the vehicle is in operation.

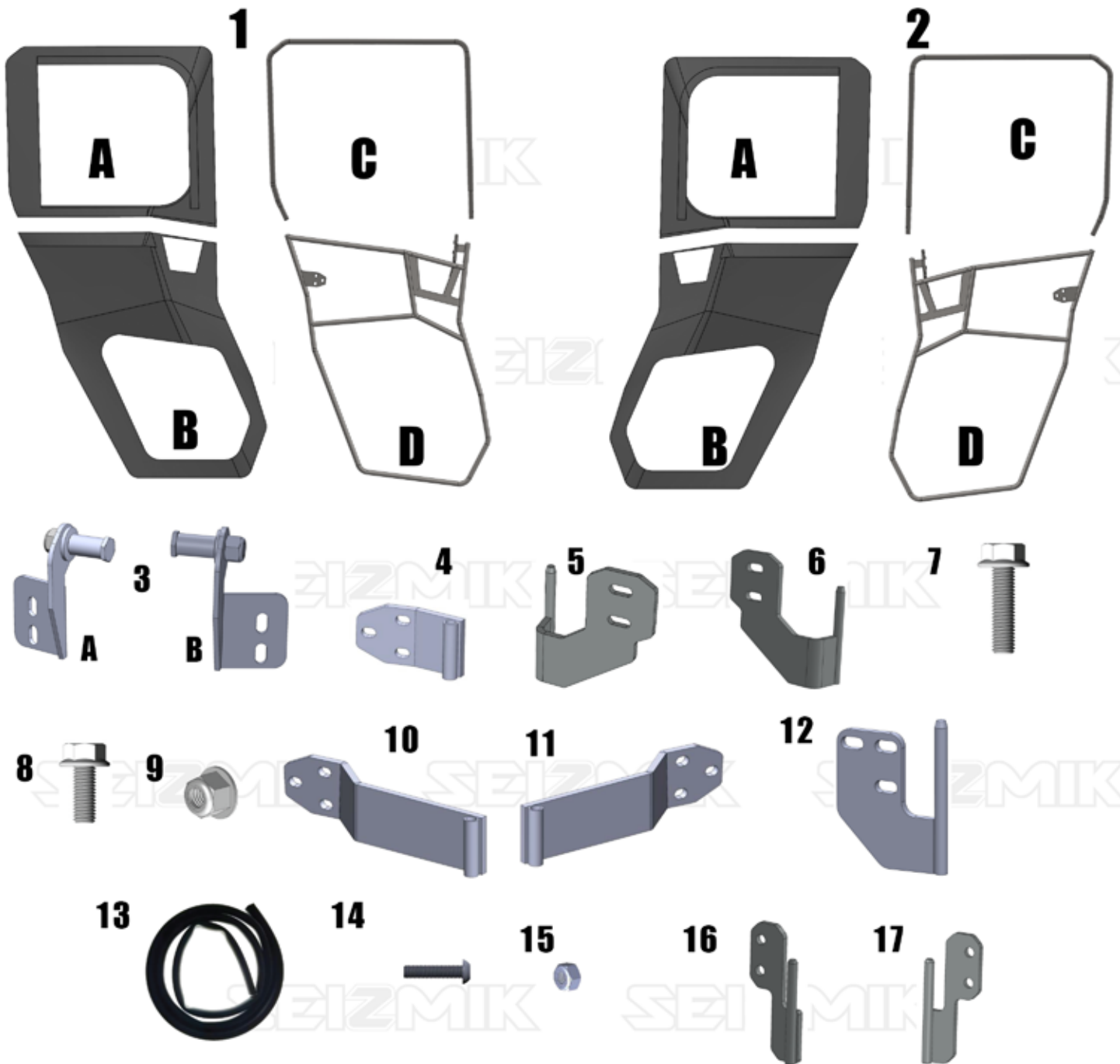
PARTS

ITEM #52-06032KIT



	QTY		QTY
1. PASSENGER SIDE UPPER AND LOWER DOOR	1	7. M8X25 FLANGE BOLT	12
A) UPPER TEXTILE		8. M8X20 FLANGE BOLT	16
B) LOWER TEXTILE		9. M8 FLANGE NUT	12
C) UPPER FRAME		10. LEFT LOWER HINGE PLATE	1
D) LOWER FRAME		11. RIGHT LOWER HINGE PLATE	1
2. DRIVER SIDE LOWER AND UPPER DOOR	1	12. LOWER HINGE MOUNT	2
A) UPPER TEXTILE		13. DOOR GASKET-EACH 14'	2
B) LOWER TEXTILE		14. M6X25 BUTTON HEAD BOLT	4
C) UPPER FRAME		15. M6 LOCK NUT	4
D) LOWER FRAME		*16. FRONT DOOR UPPER PASSENGER	1
3. STRIKER BOLT ASSEMBLY	2	*17. FRONT DOOR UPPER DRIVER	1
A) DRIVER SIDE			
B) PASSENGER SIDE			
4. UPPER HINGE PLATE	2		
5. LEFT UPPER HINGE MOUNT	1		
6. RIGHT UPPER HINGE MOUNT	1		

*ITEMS 16 & 17 WILL NEED TO BE USED FOR THE UPPER HINGES ON THE FRONT DOORS.



FRONT DOOR INSTALLATION INFO

52-06032KIT - Defender Crew Rear Doors

If you already have a set of Seizmik Front Doors (52-06027), you will need to use brackets 16-17 in this kit for the front doors installation on the Defender Crew machines.

52-06069 - Defender Crew Front and Rear Doors

You should receive 2 boxes with your shipment:

1. 52-06027 Defender Front Doors
2. 52-06032KIT Defender Crew Rear Doors

***Attention - you will need to use items 16-17 in the 52-06032kit for installing the 52-06027 Defender Front Doors. Items H in the 52-06027 Defender Front Door box will not be used with the 4 door model.**



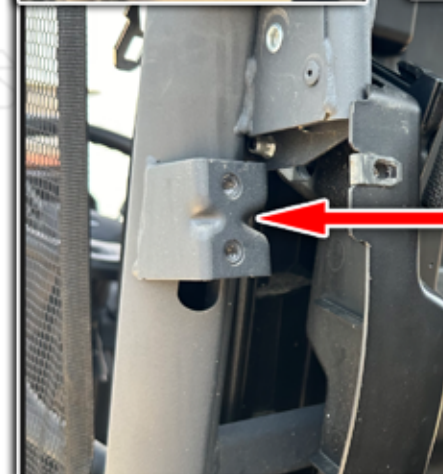
IF YOUR MACHINE HAS NEVER HAD DOORS INSTALLED ON IT YOU WILL NEED TO REMOVE THE PIECE HIGHLIGHTED IN RED AND TRIM OUT THE SLOT.

YOU WILL NEED A TORQUE SCREWDRIVER TO REMOVE THE BOLTS ALONG THE OUTSIDE OF THE PLASTIC.

KEEP ALL BOLTS TO USE FOR REINSTALLING THE PLASTICS.



ONCE THE PLASTIC IS REMOVED, TRIM AND REMOVE VERTICAL RECTANGLE AREA. THIS WILL ALLOW FOR THE LOWER FRONT DOOR BRACKET TO BE INSTALLED.



THIS IS WHERE YOU WILL BE ATTACHING THE FRONT LOWER BRACKET.

FRONT DOOR INSTALLATION INFO



ENSURE THE HINGE IS FACING TOWARD THE FRONT OF THE VEHICLE. INSTALL USING TWO M8X20 FLANGE BOLTS.

ONCE THE FRONT BRACKETS ARE INSTALLED REFER TO THE 52-06027 INSTRUCTIONS FOR ASSEMBLING THE

ATTACH THE FRONT LOWER PASSENGER HINGE PLATE TO THE BRACKET. THE HINGE WILL BE IN THE FRONT DOOR BOX 0602, ITEM i.

INSTALL USING TWO M8X20 FLANGE BOLTS.

REINSTALL THE NOW TRIMMED OUT PLASTIC COVER



STEP 1 HINGE BRACKET AND STRIKER BOLT INSTALLATION



LOCATE THE TWO THREADED HOLES LOCATED DIRECTLY BEHIND THE FRONT PASSENGER SEAT AND INSTALL THE STRIKER BOLT USING TWO M8X20 FLANGE BOLTS. DO NOT FULLY TIGHTEN THESE YET AS YOU WILL NEED TO ADJUST THIS LATER.

THE STRIKER BOLT SHOULD BE POINTING TO THE REAR OF THE MACHINE.



REMOVE THE TORX BOLTS AND PLASTIC COVER AT THE TOP AT THE REAR OF THE UNIT.

FASTEN THE UPPER BRACKET SHOWN USING 2 OF THE M8X20 BOLTS PROVIDED TO THE THREADED HOLES .





LIFT THE BED ON THE VEHICLE AND LOCATE THE TWO THREADED HOLES IN THE LOWER REAR LOCATION SHOWN IN THE LOCATION REFERENCE IMAGE. INSTALL THE LOWER HINGE BRACKET USING 2 M8X20 FLANGE HEAD BOLTS. DO NOT FULLY TIGHTEN AT THIS TIME.



STEP 2

DOOR ASSEMBLY



THIS IS THE ORIENTATION OF HOW THE DOORS WILL BE ASSEMBLED.

SLIDE THE TOP DOOR FRAME ONTO THE BOTTOM DOOR FRAME. YOU WILL HAVE TO FLEX THE BOTTOM FRAME SLIGHTLY TO LINE UP THE TUBES.

BOLT IN PLACE FRONT AND REAR USING THE 6MM X 25 BUTTON HEAD BOLTS AND NUTS.

THE BOLT HEADS MUST BE ON THE OUTSIDE OF THE FRAME SO THE BOLTS DON'T RUB THROUGH THE TEXTILE. TIGHTEN THE BOLT TO HAND TIGHT.



FOLD THE TOP FLAP ON THE LOWER DOOR TEXTILE OVER THE TOP TUBE, PULL TIGHT, AND FASTEN THE VELCRO.



AT THIS POINT, LOOSEN VELCRO FLAPS AS NEEDED TO PULL THE TEXTILE TIGHT AND FIT AS WELL AS YOU CAN.



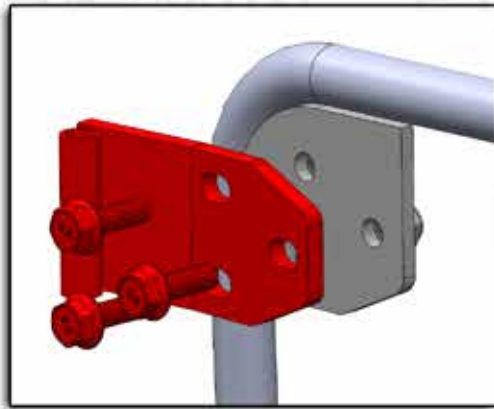
KEEP RE-ADJUSTING UNTIL THE TEXTILE IS TAUGHT AND AS WRINKLE FREE AS YOU CAN MAKE IT.



SEIZMIK

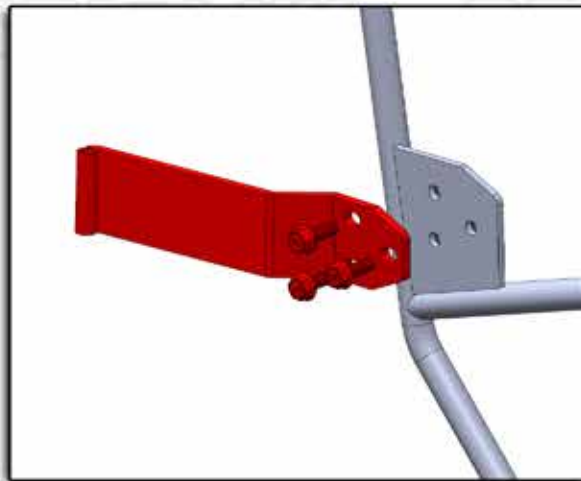
STEP 3

HINGE INSTALLATION



ONCE YOU ARE HAPPY WITH THE TEXTILE FIT, LOCATE THE HOLES FOR THE HINGES.

USING A SHARP KNIFE MAKE A SLIT IN THE TEXTILES AT ALL SIX LOCATIONS FOR THE BOLTS TO PASS THROUGH.



BOLT THE HINGES ON AS SHOWN USING THE M8X25 FLANGE HEAD BOLTS AND NUTS.

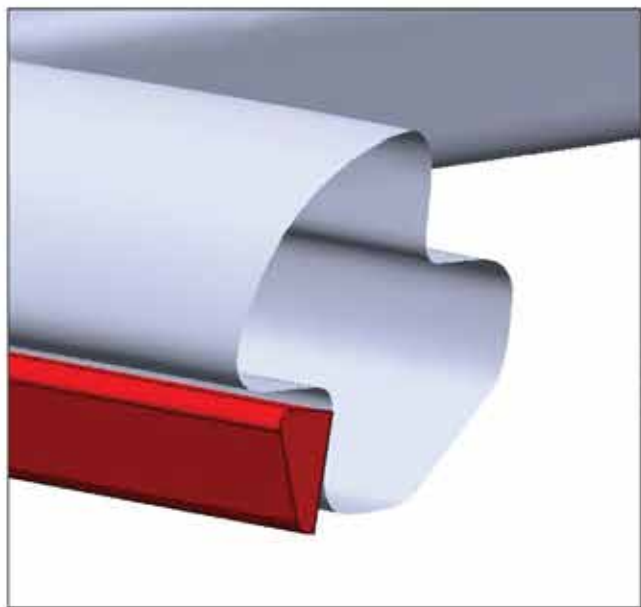
DO NOT FULLY TIGHTEN AT THIS TIME.



STEP 4

WEATHERSTRIP INSTALLATION

IMPORTANT! CLEAN THE WEATHERSTRIP MOUNTING SURFACE THOROUGHLY WITH RUBBING ALCOHOL TO ENSURE GOOD TAPE ADHESION.



MAKE SURE GASKET IS ORIENTED AS SHOWN WITH THE LARGE PART OF THE WEATHERSTRIP FACING AWAY FROM THE DOOR.

START A FEW INCHES BELOW THE STRIKER BOLT.



AFTER CLEANING MOUNTING SURFACE AND MAKING SURE THE GASKET IS ORIENTED CORRECTLY, PEEL BACKING FROM ADHESIVE A LITTLE AT A TIME AND GENTLY PRESS INTO PLACE EVERY FEW INCHES.

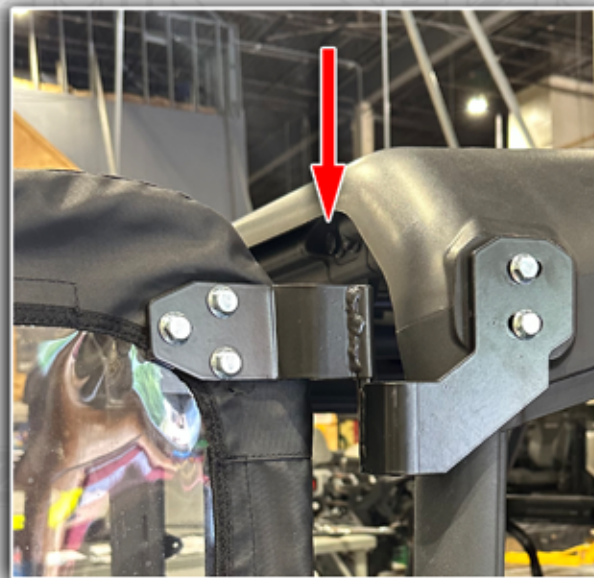
TRY NOT TO STRETCH THE GASKET AS YOU GO. GO AROUND THE ENTIRE DOOR OPENING UNTIL YOU REACH THE STARTING POINT, THEN USE A PAIR OF SCISSORS OR SHARP KNIFE TO TRIM THE END.



BECAUSE YOU ONLY LIGHTLY PRESSED IT DOWN EVERY FEW INCHES YOU WILL BE ABLE TO REPOSITION IT IF NEEDED. ONCE YOU ARE SATISFIED WITH THE FIT PRESS THE ADHESIVE DOWN FIRMLY ALONG ITS ENTIRE LENGTH.

STEP 5

INSTALL DOORS



SAME STEPS APPLY WHEN INSTALLING THE FRONT DOORS

MOUNT THE DOOR: SLIDE DOOR ONTO PREVIOUSLY INSTALLED HINGE MOUNTS. BECAUSE EVERYTHING IS STILL LOOSE IT MAY BE NECESSARY TO WIGGLE THE DOOR A BIT TO GET IT TO SLIDE ALL THE WAY ONTO THE HINGE PINS. CLOSE AND LATCH THE DOOR GENTLY.

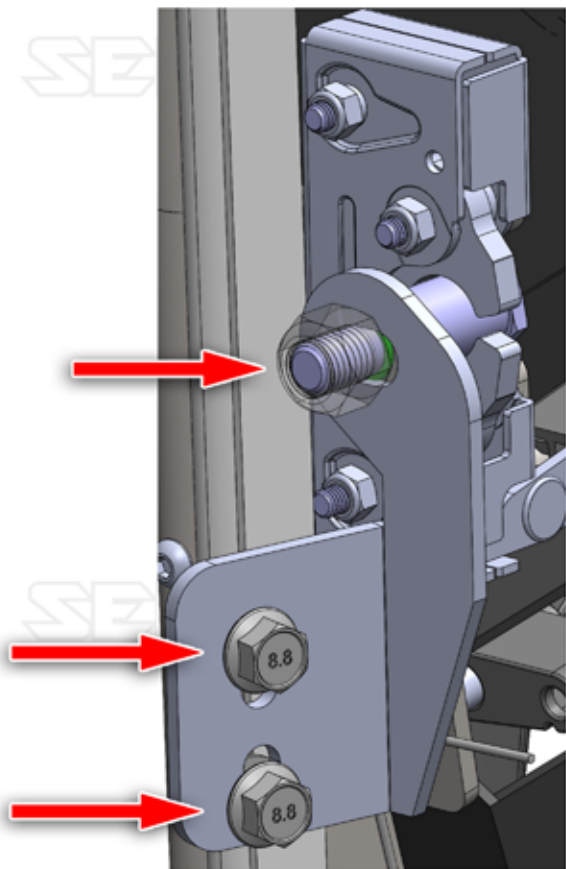
ADJUST THE DOOR POSITION: MOVE THE DOOR AROUND UNTIL THE GAP IS EVEN ALL THE WAY AROUND THE DOOR.

SNUG THE STRIKER BOLT MOUNT BOLTS DOWN OR HAVE SOMEBODY HELP HOLD THE DOOR IN THIS POSITION. *DO NOT WORRY HOW TIGHTLY THE DOOR IS CLOSED AT THIS POINT. TIGHTEN ALL HINGE BOLTS.*

ADJUST HOW TIGHTLY THE DOOR CLOSES: PULL THE OUTSIDE HANDLE AND THE DOOR SHOULD RELEASE AND OPEN. LOOSEN THE STRIKER BOLT MOUNT BOLTS AND PULL THE MOUNT AS FAR OUT AS IT WILL GO.

SNUG THE BOLTS BACK DOWN. THE ROTARY LATCH IN THE DOOR MECHANISM HAS TWO POSITIONS AS IT CLOSES OVER THE STRIKER BOLT. GENTLY CLOSE THE DOOR AND PUSH IT UNTIL YOU HEAR IT CLICK TWICE. NOW LOOSEN THE STRIKER BOLT MOUNTING PLATE BOLTS AND PUSH THE DOOR UNTIL IT FULLY COMPRESSES THE GASKET.

TIGHTEN THE STRIKER BOLT MOUNTING PLATE BOLTS AGAIN WHILE HOLDING THE DOOR IN THIS POSITION. OPEN THE DOOR AND SHUT IT AGAIN TO VERIFY THAT YOU CAN CLOSE THE DOOR WITHOUT HAVING TO SLAM IT HARD AND THAT THE LATCH HAS CLICKED TWICE AND CLOSED COMPLETELY.



STEP 6

DOOR ADJUSTMENT

ONCE THE DOOR IS FULLY DOWN ON THE BOTTOM HINGE, CLOSE THE DOOR SHUT.

IF YOU ARE HAPPY WITH THE FITMENT OF THE DOOR REMEMBER TO GO BACK AND TIGHTEN ALL THE BOLTS. AFTER ALL THE BOLTS ARE TIGHT, CLOSE THE DOOR AND KEEP IT SHUT FOR AWHILE TO ALLOW FOR THE DOOR GASKET TO ADHERE.



SEIZMIK

SEIZMIK

SEIZMIK

SEIZMIK

SEIZMIK

THANK YOU FOR CHOOSING

SEIZMIK

SEIZMIK

SEIZMIK