



780 Professional Drive N. Shreveport, LA 71105 Phone (318)-524-2270 Fax (318)-524-2297

Can-Am 1000 Outlander Lift Kit Installation Instructions

Read before Installation

This product is designed for use on ATVs and/or RUVs to increase ground clearance and fender clearance. Purchasers should be aware that use of this product may increase the frequency of required maintenance, part wear, and will raise the center of gravity on your ATV and/or RUV, increasing risk of roll-over, injury and death on all types of terrain. It is your responsibility to always inform other operators and passengers of this vehicle about the added risks.

High Lifter Products, products are designed to best fit users ATV/RUV under stock conditions. Adding, modifying, or fabricating any OEM or aftermarket parts will void warranty. High Lifter Products, products could interfere with other aftermarket accessories. If the user has aftermarket products on machine, contact High Lifter Products to verify that they will work together. Adding aftermarket suspension components and/or more aggressive tires can cause breakage of other OEM driveline components such as differentials, axles or drive shafts.

We recommend that wider tires and/or wheel spacers be used to achieve a wider stance and to improve stability of the ATV and/or RUV. Riders should be advised that the handling characteristics of a taller ATV and/or RUV are different and require extra care when riding, particularly on side hills or off-camber situations. If you further raise the center of gravity by adding taller tires, heavy loads to racks or seats, or by any other means, the ATV and/or RUV must be operated with even more care, at slower speeds and on relatively flat ground. All turns should be done at a slow speed, even on level ground.

Operation of an ATV and/or RUV with or without modified suspension components, while or shortly after consuming alcohol or drugs, subjects the rider to the risk of serious bodily harm or possible death. This risk is compounded if the rider does not wear an approved helmet and other safety gear. High Lifter urges that all approved safety gear be worn when riding an ATV and/or RUV as a driver or passenger.

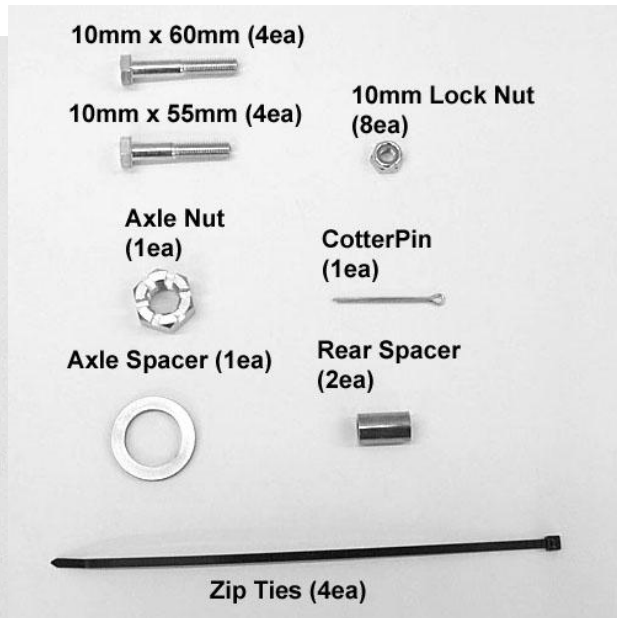
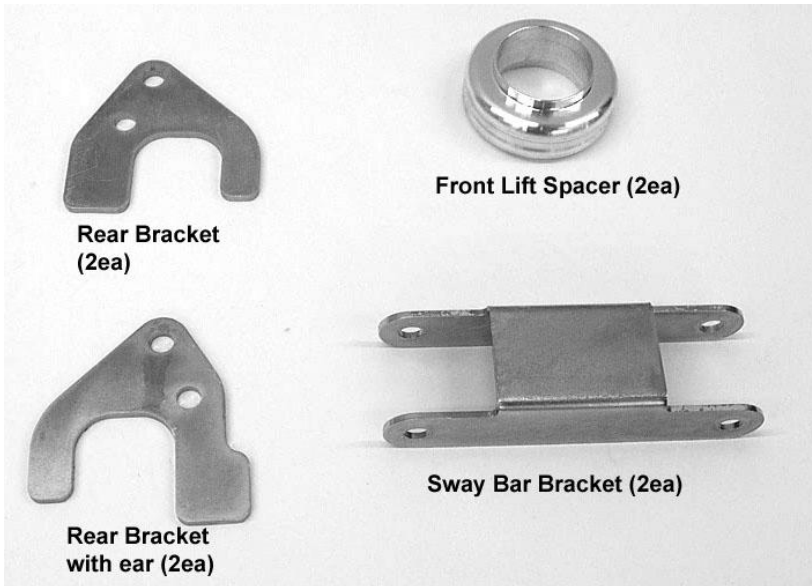
By purchasing and installing High Lifter Products, products, user agrees that should damages occur, High Lifter Products will not be held responsible for loss of time, use, labor fees, replacement parts, or freight charges. High Lifter Products will not be held responsible for any direct, indirect, incidental, special, or consequential damages that result from any product purchased from High Lifter Products. The total liability of seller to user for all damages, losses, and causes of action, shall not exceed the total purchase price paid for the product that gives rise to the claim.

Dealers and other Installers

You are responsible for informing your customer and end user of the information contained above and the increased potential hazards of operating an ATV and/or RUV equipped with modified suspension components. If you install any suspension modifying components, it is your responsibility to also install the warning label prominently in view of the driver and in prominent view of the driver and passenger on RUVs and multi-passenger ATVs. They should also be instructed to notify anyone operating the vehicle, as well as any passengers, that said vehicle is modified.

As discussed above, it is critically important that they be instructed in the need for slower speed operation, regardless of terrain, after this lift kit is installed.

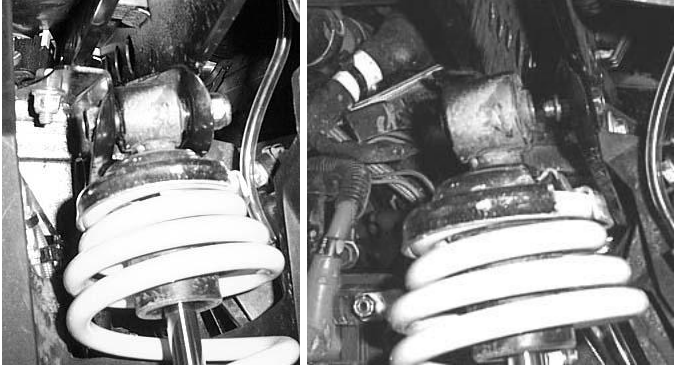
Parts Diagram



Note: Left and Right positions are from the seated position on the ATV.
NOTE: The logo bracket me look different from picture

Front Lift Installation

- 1) Place ATV transmission in park. Place jack under center of ATV front end and lift until front wheels clear the ground. Be careful to support ATV properly so that it is securely supported so that A-arms and shocks can droop to full extension.
- 2) Remove front wheels.
- 3) Disconnect and remove the shock from the ATV.



- 4) Using a spring compressor, compress the shock and remove the stock spring.



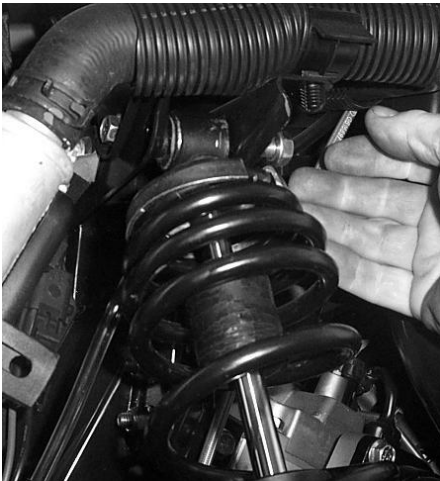
- 5) Next, insert the spring stiffener onto the shock.



- 6) Place the stock spring(s) back onto the shock.



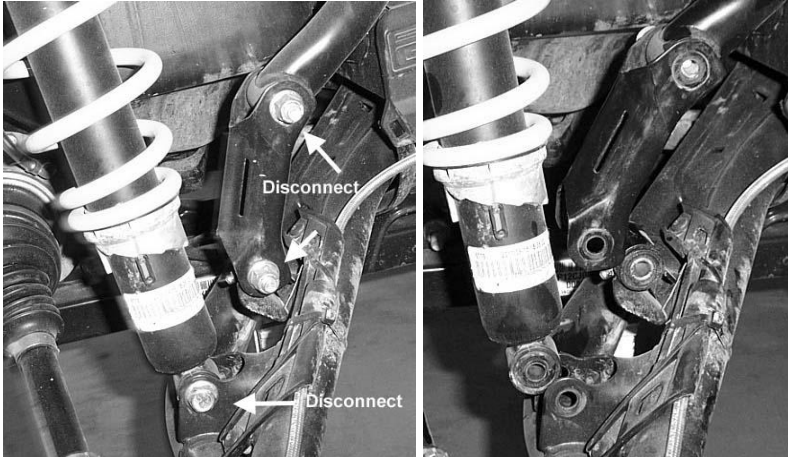
- 7) Attach the shock back onto the ATV.



- 8) Repeat steps for opposite side.
- 9) When you have completed the installation place the wheels back on the ATV and torque lugs to factory specifications. Lower and remove jack.

Rear Lift

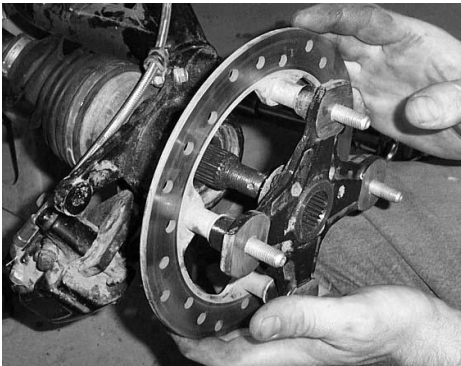
- 1) Place jack under the center of the ATV and lift until the weight is off the suspension. Be careful to secure the ATV properly so it is stable on the jack.
- 2) Remove the rear wheels.
- 3) Disconnect the bottom of the shock and the brackets that connect the sway bar bracket to the sway bar and arms. **Disconnect both sides!**



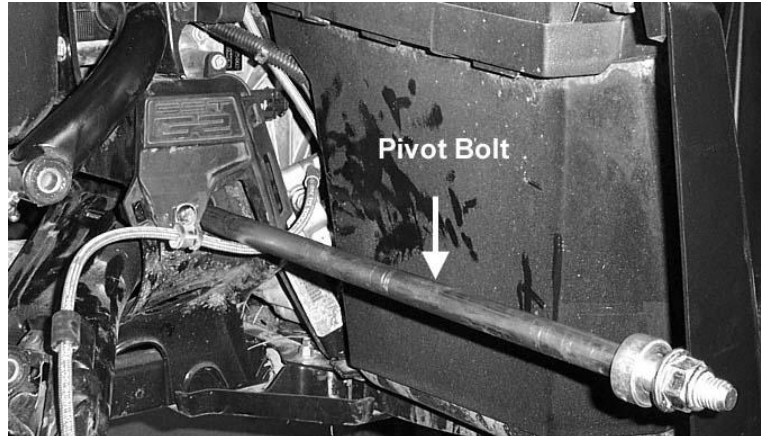
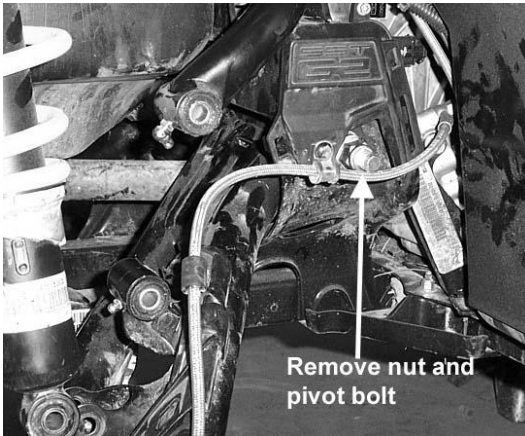
- 4) When the rear arms are at full extension they will be resting on a plate that is connected to the frame. You will need to mark this area where it is touching and trim later. You will need to trim both sides.



- 5) Remove the castle nut and hub from the ATV.



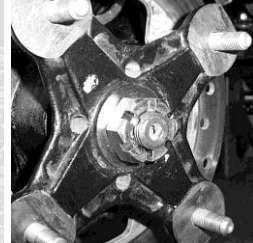
- 6) Disconnect the pivot rod. You only need to remove the nut from one side on the pivot rod. You can pull it out from the opposite side that has the nut still attached.



- 7) Once you remove the pivot rod the rear arms will be free from the ATV. Remove them then trim the marked area on the plate.

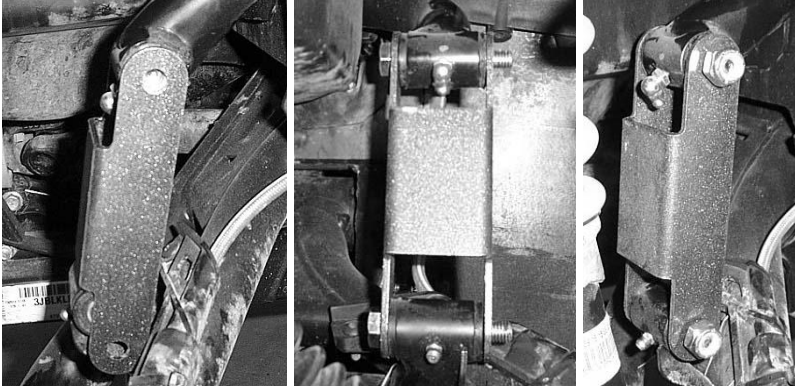


- 8) **ONLY ON THE REAR RIGHT:** Insert the new axle spacer on the axle and place the hub back on the ATV. Then fasten with the new castle provided in the kit. Do both sides at this point.



- 9) Reattach the arms and pivot rod to the ATV.

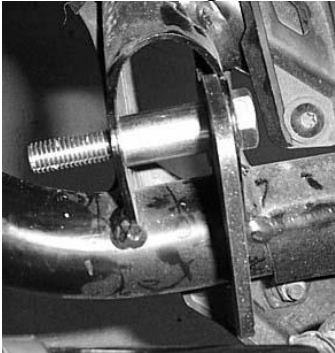
10) Connect the new sway bar brackets to the sway bar and rear arms. Use two 10x60 hex bolts and 10mm lock nuts to secure the bracket.



11) Insert the rear lift bracket that has the ear on it into the shock mount tab.



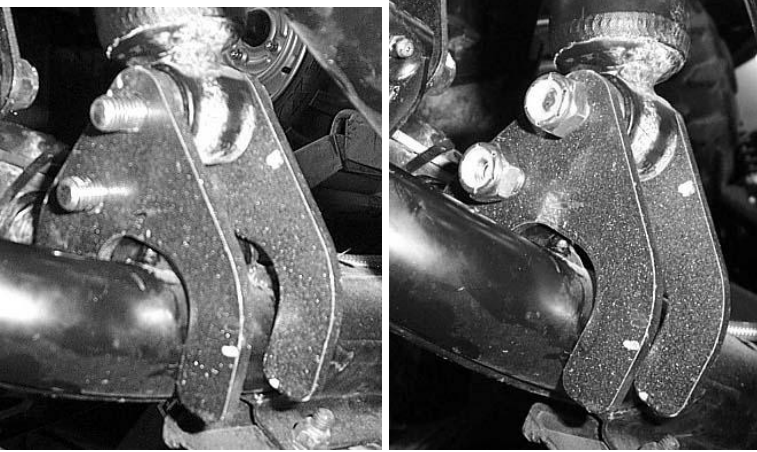
12) Insert the rear spacer into the shock mount tab next to the bracket, and then insert the 10x55.



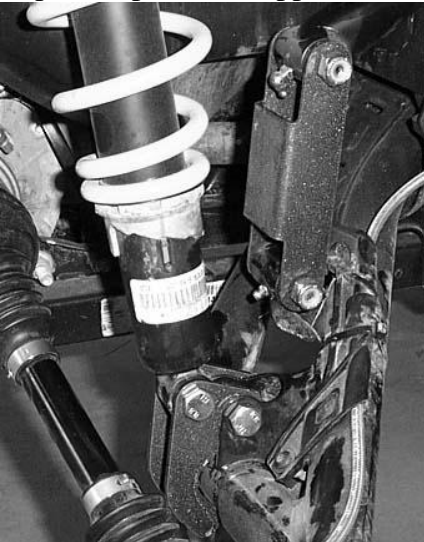
13) Connect the bottom of the shock to the lift bracket using a 10x55 hex bolt and 10mm lock nut.



14) Place the other rear lift bracket to the outside of the shock tab and secure it with two 10mm lock nuts.



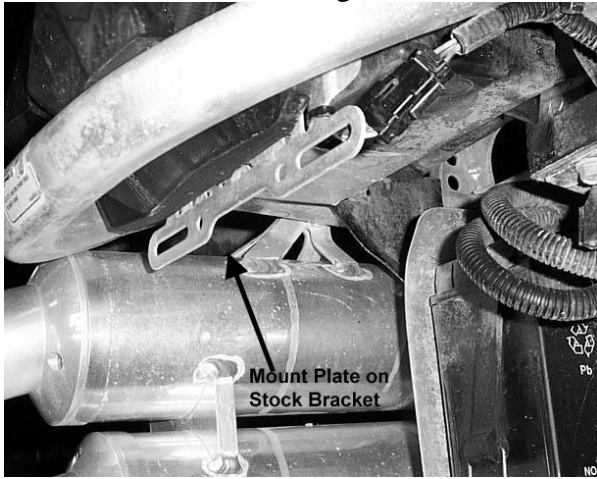
15) Repeat steps for the opposite side.



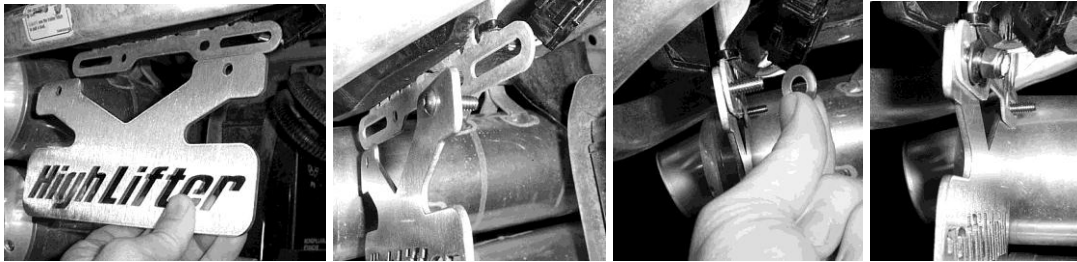
16) Place wheels back on ATV and torque all lugs to factory specifications.

Badge Installation for ATV's equipped with a license plate bracket:

1. Locate the stock mounting bracket.



2. Mount the High Lifter Badge to the stock mounting bracket.
3. Use the 1/4" x 3/4" button head bolts, 1/4" washers, and 1/4" lock nuts provided.



Thank You
For Choosing
High Lifter
PRODUCTS



High Lifter Lifetime Warranty

From the beginning, High Lifter has engineered and manufactured some of the toughest, most durable products on the market. That's why this product comes with a Lifetime Warranty. It's our promise that High Lifter will never let you down.

- The **Lifetime Warranty** covers products sold to the original purchaser only and is not transferable. The term of the warranty is for the lifetime of the vehicle in question.
- Normal wear and tear items and finishes, such as, but not limited to: Heim joints, tie rod ends, ball joints, bearings, seals, bushings, bushing sleeves, zinc plating , powder coating, or chipping and discoloration of any finish is not covered.
- High Lifter will ship the replacement product after the returned product has been inspected by High Lifter staff.
- The warranty shall not include claims for damages, installation time or labor charges, economic losses, inconvenience, transportation, towing, down time, direct or indirect or consequential damages or delay resulting from any defect.
- The warranty does not apply to products that have been improperly applied or improperly installed.

Making a warranty claim

1. All claims must be accompanied by the part and the original sales receipt or other acceptable proof of purchase from the original owner.
2. All warranties must be accompanied with a Return Merchandise Authorization (RMA) number. (Contact High Lifter at 318-524-2270 or 800-699-0947 for an RMA number)
3. When shipping the damaged product:
 - a. Write the RMA number on the outside of the box.
 - b. Also include the RMA number, proof of purchase and any notes inside the box.
 - c. Please keep your tracking number and shipment information.
4. The customer is responsible for shipping the product to High Lifter--return shipping within the lower 48 states will be paid by High Lifter products. With all warranty claims, only standard shipping services apply.
5. High Lifter will process your order within 24 business hours of receiving the returned item.
6. **Ship to:** High Lifter Products, 780 Professional Drive North, Shreveport, Louisiana 71105